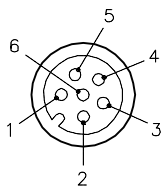
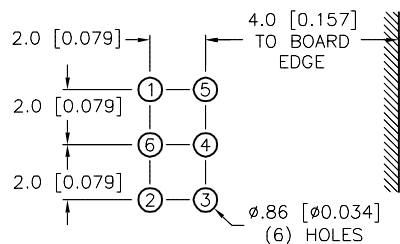


## MALE END VIEW

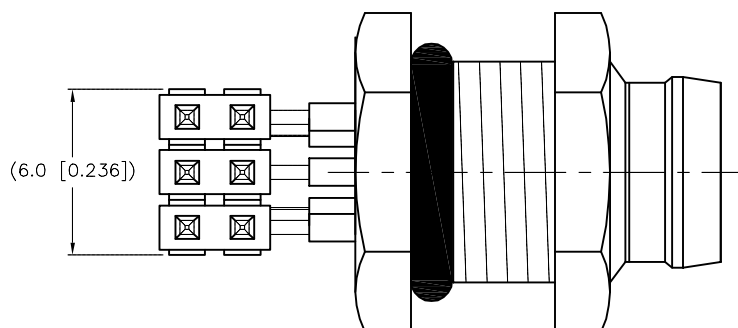
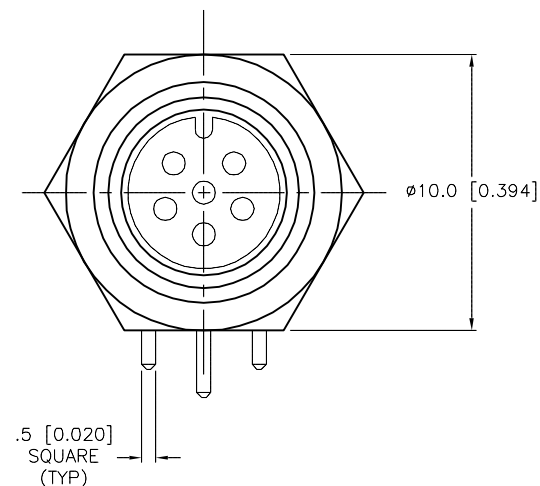
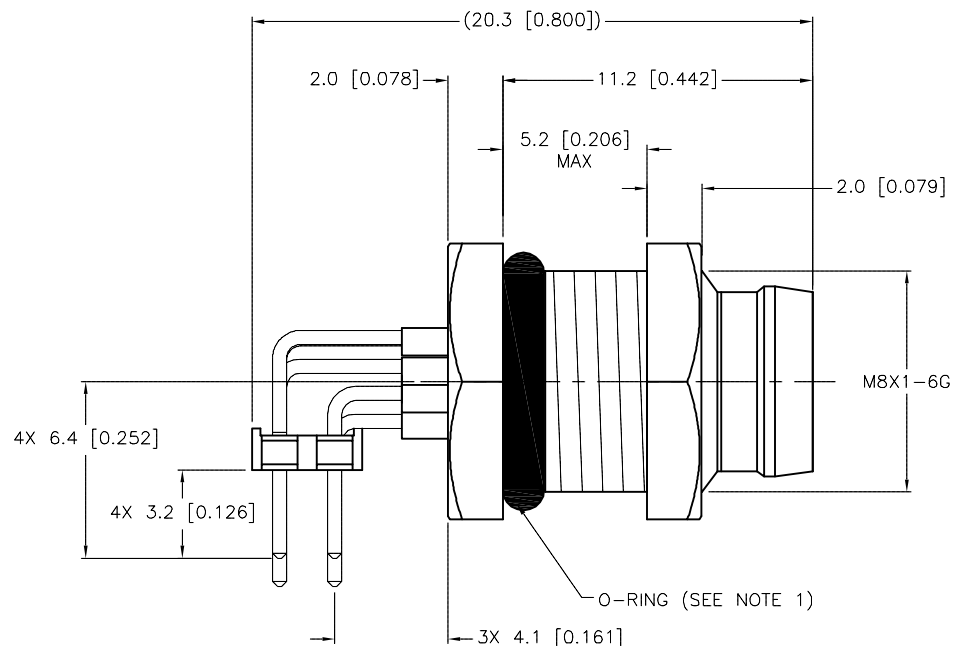


## PIN-OUT DIAGRAM



## SPECIFICATIONS

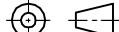
|                                |                                  |
|--------------------------------|----------------------------------|
| CONTACT CARRIER MATERIAL/COLOR | TPU/BLACK                        |
| CONTACT MATERIAL/PLATING       | BRASS/GOLD                       |
| HOUSING MATERIAL/PLATING       | BRASS/NICKEL                     |
| O-RING MATERIAL                | VITON                            |
| NUMBER OF CONTACTS             | 6 x 0.025 IN SQ. POSTS           |
| RATED CURRENT [A]              | 1.0 A                            |
| RATED VOLTAGE [V]              | 50 VAC/60 VDC                    |
| TEMPERATURE RANGE              | -30°C to +80°C (-22°F to +176°F) |
| MAXIMUM PCB THICKNESS          | 1.6 MM [0.06 IN]                 |
| PROTECTION CLASS               | MEETS NEMA 1,3,4,6P AND IEC IP67 |



## NOTES:

1. "/CS12049" DESIGNATES LARGER O-RING INCLUDED. (ø7.0mm I.D. x 1.5mm THK)

## SOURCE DRAWING - FOR REFERENCE ONLY

|  |  |   |     |  |   |  |              |
|--|--|---|-----|--|---|--|--------------|
| RELATED DOCUMENTS<br>1. 8-164-02 revP2<br>2.<br>3.<br>4. | 3RD ANGLE<br>PROJECTION  |  |     | THIS DRAWING IS<br>CONFIDENTIAL AND THE<br>PROPERTY OF TURCK<br>INC. USE OF THIS<br>DOCUMENT WITHOUT<br>WRITTEN PERMISSION IS<br>PROHIBITED. | <b>TURCK INC</b><br><i>High Technology Sensors and Automation Controls</i><br><br>3000 CAMPUS DRIVE<br>MINNEAPOLIS, MN 55441<br>1-800-544-7769<br>(763) 553-7300<br>(763) 553-0708 fax<br>turck.com |  |              |
|  |  |   |     |  |   |  |              |
|  |  |   |     |  |   |  |              |
|  |  |   |     |  |   |  |              |
| MATERIAL   | ALL DIMENSIONS<br>DISPLAYED ON THIS<br>DRAWING ARE FOR<br>REFERENCE ONLY<br><br>CONTACT TURCK<br>FOR MORE<br>INFORMATION | DRFT  | RDS | DATE   | 10/02/08  | DESCRIPTION<br><br>WMFS 6F-PCB/CS12049 |              |
|  |  | APVD  |     | SCALE  | 4=1   |  |              |
| FINISH   |  | UNIT OF MEASUREMENT<br><br><b>MILLIMETER [ INCH ]</b>                                 |     |  |   | IDENTIFICATION NO.<br><br>U2-14756     | REV<br><br>B |
|  |  | DO NOT SCALE THIS DRAWING   |     |  |   | FILE: U2-14756                         | SHEET 1 OF 1 |

|     |                                  |    |          |         |
|-----|----------------------------------|----|----------|---------|
| B   | UPDATED CONTACT CARRIER MATERIAL | NF | 09/09/15 | 49034   |
| REV | DESCRIPTION                      | BY | DATE     | ECO NO. |